



News, Events and Resources | August 2021

[Event] The social service workforce in and beyond the pandemic

A global conversation on adaptation, innovation and the fight for social justice

The Global Social Service Workforce Alliance, in collaboration with Children and Families Across Borders, invites you to a global conversation on the biggest issues facing the global social service workforce today.

Taking place **Wednesday 15th September from 1-4pm UTC**, this virtual event serves as a unique opportunity for social service practitioners, experts and policy makers from around the world to come together to discuss 1) the adaptations made in social services and social work practices during the pandemic that

may remain as part of how we work in the future, 2) the risks and challenges that have emerged from this new way of working, and 3) the wider role of the social service workforce in advancing social justice, in light of the deepening of social inequality during the pandemic.

[Register to attend.](#)

The poster features the logos of CFAB (Children and Families Across Borders) and the Global Social Service Workforce Alliance at the top. The main title "The social service workforce in and beyond the pandemic" is prominently displayed in bold. Below it, the subtitle "A global conversation on adaptation, innovation and the fight for social justice" is written in a smaller font. The date and time "15 September | 1-4pm UTC" are listed at the bottom. On the right side of the poster, there is a close-up photograph of a person wearing a teal surgical mask, with only their eyes visible above the mask.

Calls to Action

Endorse the Together to #Endviolence campaign

One billion children experience violence every year. That shocking figure has risen even higher during the COVID-19 pandemic. As part of the [Together to #ENDviolence](#) campaign, experts from across the End Violence community have developed a prioritized set of policy proposals to end all violence and abuse of children, informed by evidence and research from across the world. Through the [Together to #ENDviolence Leaders' Statement](#), senior leaders from across sectors and continents are using the power of their collective voice to call for leaders everywhere to adopt and implement these game-changing policy proposals.



[Read, share and endorse the Leaders' Statement and see the policy proposals.](#)

Upcoming Events

[Webinar] The impact of COVID-19 on privately run residential care institutions | 10 August 2021

This webinar, the fifth in the Transforming Children's Care Webinar Series will focus on the new study Impact of COVID-19 on Privately Run Residential Care Institutions: Insights and Implications for Advocacy and Awareness Raising. The study explores the effect of COVID-19 on a small number of privately run and funded residential care institutions by conducting a qualitative research study comprising 21 semi-structured interviews across seven focus countries.

[View more information and register to attend.](#)

[Virtual Conference] Social work education and interventions at the time of the COVID-19 pandemic | 11 & 12 September 2021

The University of Social Welfare and Rehabilitation Sciences and the Iranian Scientific Association of Social Work will host a virtual conference on social work education and practice during COVID-19. The conference will provide an opportunity to hear from a range of speakers highlighting how the pandemic has affected social work practice, education, lessons learned and hopes for the future.

[View more information and register to attend.](#)

[Training] International child protection and kinship care training | 20 & 21 October 2021

Children and Families Across Borders will host an e-training for children's social workers who work in child protection or on care proceedings cases with a cross-border element. The training will be delivered over two half day sessions with a focus on social work in an international context, cross-border child protection cases, care proceedings requiring cross-border cooperation and practical issues in international placements. Fee: £50 (GBP)

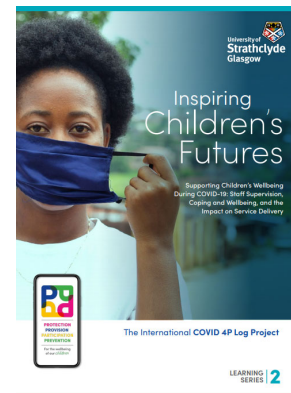
[View more information and register to attend.](#)

Resources

Most of the resources below can be found in our [Resource Database](#). For resources specific to COVID-19, be sure to view our [COVID-19 Resources](#) page. If you have a new resource to share, [please submit it via our contribution form](#).

[Report] Supporting Children's Wellbeing During COVID-19: Staff Supervision, Coping and Wellbeing, and the Impact on Service Delivery

This second report in the series of COVID Learning Reports from the COVID 4P Log project presents findings from COVID 4P Log responses about respondents' experiences of receiving supervision during the pandemic, as well as about their coping and wellbeing during this time. The report discusses topics such as the characteristics of useful supervision, as well as the impact of having (or not having) such supervision on respondents' coping and work performance. The report also discusses how respondents managed the stresses and anxieties experienced during the pandemic, and what type of support (formal and informal) they deemed most helpful in meeting those challenges.



[Access the report.](#)

[Journal article] Ubuntu and its potential impact on the international social work profession

Ubuntu is the current theme for the Global Agenda for Social Work and Social Development and represents the highest level of global messaging within the social work profession for the years 2020–2030. This article presents an in-depth description of Ubuntu as a philosophy of social development that can strengthen social work theory and practice in its global aims of supporting community systems of social protection and social justice. The article concludes with advancing proposals on how the learnings from Ubuntu can strengthen international social work ethics, principles and practice.



[Access the journal article.](#)

[Report] Children: The Hidden Pandemic 2021 – A joint report of COVID-19- associated orphanhood and a strategy for action

This report presents statistical data from 192 countries on children experiencing COVID-19- associated orphanhood and death of grandparent caregivers, a description of the trends in these

data, a real-time COVID-19 Calculator for Death of Parents and Caregivers, and strategies and principles for integrating care for children bereaved by the virus into every nation's COVID-19 response planning. This report includes data from March 1, 2020 through April 30, 2021, and provides the most extensive estimates yet on the current and projected number of children experiencing orphanhood and death of caregivers.

[Access the report.](#)



Read also: [Global minimum estimates of children affected by COVID-19-associated orphanhood and deaths of caregivers: A modelling study](#)

[Report] Mainstreaming gender into social protection strategies and programs

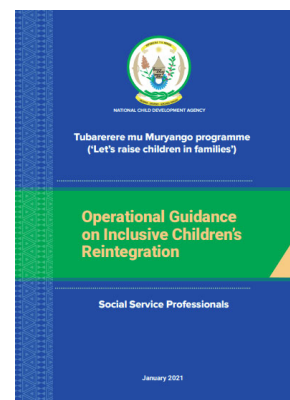
The importance of mainstreaming gender into social protection policies and programs is increasingly recognized. However, evidence on the extent to which this is actually happening remains limited. This report contributes to filling this evidence gap by drawing on the findings of two complementary research projects undertaken by UNICEF Office of Research – Innocenti and UN Women in 2019. Using a specifically developed analytical framework, these two projects reviewed 50 national social protection strategies and 40 social protection programs across a total of 74 low- and middle-income countries to assess the extent to which they incorporate gender equality concerns.



[Access the report.](#)

[Guide] Operational guidance on inclusive children's reintegration

This operational guidance describes how the Government of Rwanda conducts case management for reintegration of children from residential institutions to family-based care, including children with disabilities. It contains all the information needed for a child protection and welfare officer to carry out their case management tasks so that children can live safely and thrive with their own family or in family-based alternative care. This guidance is part of the [Tubarerere Mu Muryango \(TMM\)](#) program. The guidance also includes a supplemental [Facilitators' Manual](#) and [Participants Handbook](#).



[Access the operational guidance.](#)

[Data dashboard] Country care snapshots

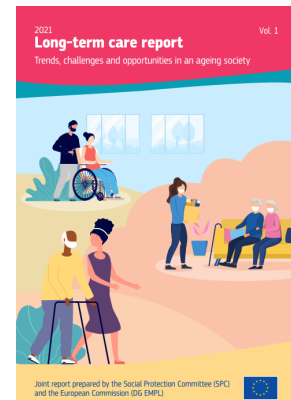
Better Care Network has developed a set of "Country Care Snapshots," that feature an interactive, icon-based data dashboard providing a high-level overview of the status of children's

care and care reform efforts country by country. The snapshots showcase progress on care reforms and highlight national-level information around a range of domains, including: demographic data, children's living arrangements, children living without biological parents, children at risk of separation, formal alternative care settings, care reform indicators, key actors, key sources of information, drivers of child institutionalisation, and other relevant reforms. The aim of the snapshots is to contribute towards the global data and evidence agenda within the care sector.

[View the snapshots on the individual country pages of the Better Care Network website.](#)

[Report] Long-term care report: Trends, challenges and opportunities in an ageing society

The 2021 Long-Term Care Report provides an overview of the state of play of long-term care systems in the EU and recent reforms, highlighting also first response measures taken during the pandemic. The report maps current and future demand for long-term care and gaps in accessing formal care, in the context of demographic changes, in particular the growing share of the older population and changes in the household structures and the labour market. It further reveals gaps in social protection coverage for long-term care and the impact these could have on the living standards of older people. Despite significant job creation potential in the sector, staff shortages are quite common, also because of difficult working conditions.



[Access the report.](#)

Opinion

COVID is creating a global child care crisis

Over 1 million children have lost 1 or more caregivers to COVID-19. Anne Smith, Global Director of Changing the Way We Care, discusses the implications if these kids end up in residential child care institutions rather than with his or her extended family. "When families experience a crisis, we find ways to keep them together. We do this by strengthening local systems, including the social service workforce," she explains.



[Read the full article.](#)

Calls for Content

The Global Social Service Workforce Alliance is always looking for content for [our blog](#). Have an idea or previously produced content focused on strengthening the social service workforce?

[Contact us.](#)



Join the Alliance

Not yet a member of the Alliance? We have over 3000 members across 145 countries who have joined us to support the work of strengthening the social service workforce. [Register to become a member.](#)

[Follow Us on Twitter](#) | [Like Us on Facebook](#) | [Follow us on LinkedIn](#) | [Forward to a Friend](#) | [Join Our Email List](#)

[About Us](#) | [Contact Us](#) | [Get Involved](#) | [Resources](#) | [Membership](#) | [Donate](#)

This email was sent to <<Email Address>>

[why did I get this?](#) [unsubscribe from this list](#) [update subscription preferences](#)

Global Social Service Workforce Alliance · 1875 Connecticut Ave NW, 10th Floor · Washington, DC 20009 · USA