



News, Events and Resources | July 2021

New Blog

Developing a framework for a strengthened child protection workforce in India

Issues of violence, abuse and exploitation—including domestic violence, child marriage, child trafficking, sexual and gender-based violence, child labour, corporal punishment, peer to peer violence, online abuse and mental distress—continue to plague millions of children in India. COVID-19 has further exacerbated such issues, as thousands of children have lost either one or both parents to the virus and the environments in which children grow and develop have been disrupted, increasing their vulnerability and making the effective delivery of child protection services even more critical. Yet, India continues to lack adequate human resource capacity to effectively ensure that children and their families receive quality age sensitive and gender responsive services critical for effectively responding to and preventing issues of violence, abuse and exploitation against/of children. In our latest blog, learn how the Global Social Service Workforce Alliance and UNICEF India are using a mapping and capacity gap assessment to determine the strengths and weaknesses of the workforce and develop a framework to ultimately strengthen the workforce.



[Read the blog.](#)

Have an idea for a blog post that would be of interest to our members? [Contact us](#) to submit your idea or content.

Upcoming Events

Annual Meeting | Alliance for Child Protection in Humanitarian Action

The Alliance for Child Protection in Humanitarian Action is organizing the 2021 Annual Meeting on Child Protection in Humanitarian Action over a virtual platform **October 4-8th 2021**. This includes 5 half-days dedicated to the theme of the annual meeting: Preventing Harm to Children. The Annual Meeting is an opportunity for humanitarian actors to come together and exchange knowledge and experience, while networking with other agencies, academics, policy makers and donors.

If you are a humanitarian worker, policy maker, donor or researcher interested in issues related to protection of children in humanitarian action, register using [this online form](#) by **August 1st**. If you intend to submit an abstract, please complete this [abstract submission form](#) and submit it either through the [registration form](#) or by emailing it to annualmeeting2021@alliancecpha.org by **August 1st**.

[View more information.](#)

Resources

Most of the resources below can be found in our [Resource Database](#). For resources specific to COVID-19, be sure to view our [COVID-19 Resources](#) page. If you have a new resource to share, [please contact us](#).

Resource Center | Launch of the East Africa Regional Resource Center

Makerere University Department of Social Work was awarded Regional Resource Centre status by the International Association of Schools of Social Work (IASSW). The Regional Resource Center will spearhead and coordinate capacity-building initiatives to strengthen professional social work education in the East Africa region. It will also create and maintain an engaged community of social work educators and programmes in East Africa.

[View more information and watch the center's launch event.](#)

Training Program | Social work practice during the COVID-19 pandemic

For World Social Work Day 2021, the Japanese Federation of Social Workers produced a training program in cooperation with social workers from around the world. The program focuses on social work responses to trauma and loss needed in crisis situations amidst the COVID-19 Pandemic. Topics include: worldwide social work trends under COVID-19, social work support and development methods under COVID-19 in Korea, supporting families and communities during COVID-19, and social work practice during the COVID-19 pandemic: community resilience and mental wellbeing.

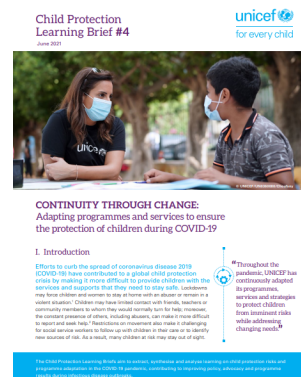
[Access the videos on each topic.](#)

Report | UNICEF Annual Report 2020

[View the full report.](#)

Learning Brief | Continuity through change: Adapting programmes and services to ensure the protection of children during COVID-19

UNICEF's Child Protection Learning Briefs aim to extract, synthesise and analyse learning on child protection risks and programme adaptation in the COVID-19 pandemic, contributing to improving policy, advocacy and programme results during infectious disease outbreaks. This learning brief examines how UNICEF has supported the continuity of efforts in child protection and in protecting women and girls at risk of gender-based violence by adapting services and programmes during COVID-19. The brief is intended to assist UNICEF country offices and practitioners as they respond to the impact of infectious disease pandemics on the protection and well-being of children and families.



[View the brief.](#)

Calls for Content

Call for Abstracts | REPSSI Psychosocial Support Forum: Innovate. Integrate. Thrive

REPSSI will be hosting their 6th Psychosocial Support forum with the theme **Innovate. Integrate. Thrive** in Maputo, Mozambique from October 13–15th. The forum will be co-hosted with the Ministry of Gender and Social Action of Mozambique and will be a blended physical and online format. A main physical forum will take place in Maputo with satellite forums in Angola, Botswana, Eswatini, Kenya, Lesotho, Malawi, Namibia, South Africa, Tanzania, Uganda, Zambia and Zimbabwe, as well as virtual for partners from around the globe. REPSSI welcomes submission of abstracts from experts around the globe in the field of psychosocial support, including policymakers, researchers, practitioners, and youth. **Deadline for submission is July 23.**



[View more details and submission guidelines.](#)



Join the Alliance

Not yet a member of the Alliance? We have over 3000 members across 145 countries who have joined us to support the work of strengthening the social service workforce. [Register to become a member.](#)

[Follow Us on Twitter](#) | [Like Us on Facebook](#) | [Follow us on LinkedIn](#) | [Forward to a Friend](#) | [Join Our Email List](#)

[About Us](#) | [Contact Us](#) | [Get Involved](#) | [Resources](#) | [Membership](#) | [Donate](#)

This email was sent to <<Email Address>>

[why did I get this?](#) [unsubscribe from this list](#) [update subscription preferences](#)

Global Social Service Workforce Alliance · 1875 Connecticut Ave NW, 10th Floor · Washington, DC 20009 · USA