



Update from the Global Social Service Workforce Alliance

Sharing Ways of Upholding and Recognizing Rights for All People

With the devastating and disproportionate impact of COVID-19 on marginalized communities, as well as global protests of police brutality and racism, we believe that this period of time we are living in calls on the values that guide social service workers every day – upholding and recognizing human dignity and protecting and promoting the fundamental rights of people.

Social service workers are trained to identify and address root causes of social issues and why social services are needed. Often those root causes stem from abuse of power, systemic racism and discrimination that lead to inequitable realization of fundamental human rights, such as dignity, life, liberty and to be free from inhumane or degrading treatment or punishment, not to mention access to health and education.

More people around the globe are open to having honest conversations about racism, discrimination and social injustice that exist in all societies to different extents. There is much we can learn from promising practices in countries around the world.

We are exploring interest in creating space to have constructive dialog around these issues. We are seeking blogs, essays, case studies and reports on the following topics:

- Personal essay on your role as an anti-racist social worker and disrupting racist policies and discriminatory practices
- Personal essay on how your social work education helped stimulate personal reflection on the ways that structural racism plays out in your personal and professional life and how you have used that awareness to influence your practice

- Blog, case study or report about a model of social work collaboration with police and/or communities that aims to address underlying social issues, prevent interactions with law enforcement and/or help to ensure that prisons or the criminal justice system are not replacements for mental health or social services.

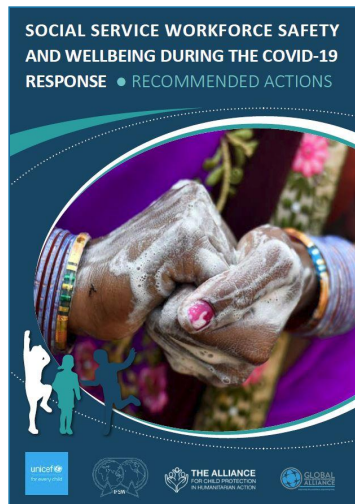
[Please email us](#) if you would like to contribute information in a blog, essay or case study, or would like to forward an existing report on any these topics. We will review submissions and depending on interest and range of submissions received, we will consider compiling a special issue for a future E-update or thematic area for this year's Social Service Workforce Week.

Additional Languages Now Available

Social Service Workforce Safety and Wellbeing during the COVID-19 Response: Recommended Actions

The recently released technical note is now available in Farsi and Portuguese, in addition to Spanish, French, Arabic, Serbian and English.

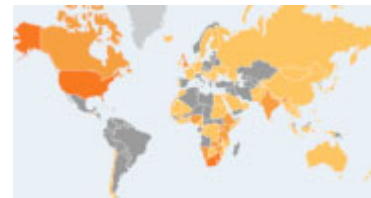
[Social Service Workforce Safety and Wellbeing during the COVID-19 Response: Recommended Actions](#) is intended to provide guidance on how to support the social service workforce and empower them to safely serve children, families, and communities during the COVID-19 pandemic.



A webinar was held on May 14 to review the technical note and learn from country-specific examples. [The full recording, written summary and presentations are now available.](#)

The technical note was jointly developed by the Global Social Service Workforce UNICEF, International Federation of Social Workers and Alliance for Child Protection in Humanitarian Action.

2020 Online Conference



Welcome New Members

The Alliance network now includes 2,700 members across 141 countries. [Invite a colleague to join.](#)



Follow Us on LinkedIn

For the latest news from the Alliance as well as updates you can share to your personal page to encourage support from global colleagues, [follow us on LinkedIn.](#)



Join the Conversation

Follow us on Twitter and [Facebook](#) to share relevant news and join the conversation.

The International Federation of Social Workers annual conference will be offered fully online and free, from July 15-19. Amy Bess, Acting Director of the Global Social Service Workforce Alliance, will deliver a keynote presentation on the topic of Social Service Workforce Strengthening over the Next 10 Years. The Alliance is proud to be a conference partner. [View the full program and register now.](#)



New Course: Adapting Child Protection Case Management during COVID-19

Join more than 5,000 participants from 160 countries in a new, free, three-week course to enhance understanding



of the heightened protection risks and vulnerabilities that children are facing around the world during the COVID-19 pandemic.

The course will review how to adapt child protection case management and discover why it's vital that child protection caseworkers and other service providers work in partnership to make sure there is a collective response to protecting a child. The course will also review examples of promising practice and will stimulate the exchange of ideas and experience between learners around the world.

This course has been made possible by the COVID-19 Case Management MOOC Taskforce, which includes the Global Social Service Workforce Alliance, and is available through

FutureLearn. It will be available through August 7, in English, French, Spanish and Arabic. [Register now to participate](#).

Resources

COVID-19 Resources

Visit our website for [COVID-19 resources and tools](#) on topics relevant to the roles of the social service workforce, including mental health and psychosocial support, child protection, case management, alternative care and separated children, gender-based violence, working with communities, communications/key messages and webinars. We are adding new resources to this list daily as more interagency work is published. If you would like us to add a resource, [please contact us](#).

[Ethical Challenges Faced by Social Workers during the COVID-19 Pandemic](#)

This new report from the Social Work Ethics Research Group in partnership with the IFSW Ethics Commission draws from 607 survey responses and additional follow-up interviews with participants from 54 countries. The research findings highlight strong commonalities on the challenges that social workers are facing as essential workers in the fight against COVID-19.

[Global Status Report on Preventing Violence Against Children 2020](#)

The Report on preventing violence against children 2020 charts countries' progress towards the SDGs aimed at ending violence against children. Jointly published by WHO, UNICEF, UNESCO, the UN Secretary-General's Special Representative on Violence against Children, and the Global Partnership to End Violence against Children, it collates inputs from over 1000 decision-makers in 155 countries who assessed their violence prevention status against the evidence-based approaches set out in INSPIRE: Seven strategies for ending violence against children. It shows that only 1 in 4 children is receiving the response and support services needed and shares some of the ways social service workers are delivering promotive, preventative and treatment services.

[Child Welfare Practice - An analysis of current research](#)

There is a large and growing body of research that

demonstrates that early experiences of adversity can have harmful impacts on children's physical, neurological, and psychological development, with effects that can persist into adulthood. This report will present an overview of the current social science literature related to the impact of out-of-home placement and family separation on the wellbeing of children who have experienced maltreatment.

[Lessons Learned and Recommendations to Strengthen Families and End Institutionalisation for Children in Europe](#)

To maximise the potential of the European Union and realise the vision where no child grows up in institutional care, civil society organisations across EU Member States, pre-accession countries and neighbourhood countries came together under a pan-European campaign: Opening Doors for Europe's Children. The campaign aimed to support national efforts to develop comprehensive, integrated child protection systems that strengthen families and ensure quality family- and community-based care for children, by leveraging EU funding and policy, and building capacity in civil society.

[Rethinking Institutional Care Using Family-Based Alternative Child Care System for Orphans and Vulnerable Children in Nigeria](#)

This paper is based on field work experience, review of relevant literature and studies on alternative child care system. The reviewers seek to rekindle not just an academic discourse in the field of social work but also a programme development innovation for social workers in the field of child welfare. Findings from the review suggest a range of family-based alternative child care that social workers in Nigeria and other developing societies may well consider in practice and programme intervention.

[Checklist to Ensure EU-funded Measures Contribute to Independent Living by Developing and Ensuring Access to Family-based and Community-based Services](#)

This document aims to ensure many more EU citizens benefit from EU funding for inclusion; and to prevent the misuse of EU funds. The purpose of this checklist is to ensure EU funds in the 2021-2027 programming period contribute to independent living and inclusion in the community. More specifically, the checklist supports desk officers to check the consistency of the measures with the legal and policy frameworks. It includes questions on

availability and use of social services and interactions with social service workers.

Opportunities

REPSSI Board Members

The Regional Psychosocial Support (REPSSI) organization is seeking nominations to the Regional Board of Directors, either self-nominations or nominations of colleagues, to serve a three or six-year term. REPSSI is renowned for providing technical leadership, advocacy and innovative capacity enhancement in psychosocial support. in 13 countries in East and Southern Africa. Board members will provide strategic, planning, budgeting, policy and/or fundraising support. Applications are due by July 31. [Read the full announcement and criteria for nominations.](#)

[Follow Us on Twitter](#) | [Like Us on Facebook](#) | [Follow us on LinkedIn](#) | [Forward to a Friend](#) | [Join Our Email List](#)

[About Us](#) | [Contact Us](#) | [Get Involved](#) | [Resources](#) | [Membership](#) | [Donate](#)

This email was sent to <<Email Address>>

[why did I get this?](#) [unsubscribe from this list](#) [update subscription preferences](#)

Global Social Service Workforce Alliance · 1875 Connecticut Ave NW, 10th Floor · Washington, DC 20009 · USA