



News, Events and Resources | April 2022

Secretariat Updates

Join the Alliance as a Steering Committee Member

The Global Social Service Workforce Alliance is currently in search of an individual to join our Steering Committee. We are looking for someone who will bring knowledge, skills and technical expertise related to social service workforce strengthening and who:

- shares our commitment to promote and advocate for the social service workforce worldwide;
- can help us identify and access new sources of funding, in particular long-term strategic funding of the Alliance's staff, platforms and core activities; and
- can help open doors to, and develop, new long-term strategic partnerships, that will help strengthen our impact and reach.

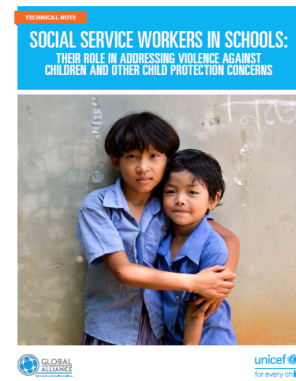
[**Read the full role description.**](#)

Interested candidates must submit a letter of interest and current resume/CV to [**contact@socialserviceworkforce.org**](mailto:contact@socialserviceworkforce.org) by April 25th.

[NEW TECHNICAL NOTE] Social Service Workforce in Schools: Their role in addressing violence against children and other child protection concerns

Schools can play a critical role in addressing violence against children and other child protection concerns within schools and communities. This role and responsibility can be best fulfilled with the help of on-site support staff, including social service workers.

Our latest technical note, developed in collaboration with UNICEF, provides ten key recommendations for how child protection concerns can be addressed in schools. It highlights the main type of services that the social service workforce, if sufficiently resourced and supported, can provide working in or with schools. It also outlines the multi-agency child protection services in or linked to schools that governments and ministries of education should support in order to uphold children's right to learning and protection from all forms of violence.



[Access the technical note.](#)

[WEBINAR RECORDING] Effective deployment of social service workers in schools and health care facilities

On World Social Work Day 2022, the Global Social Service Workforce Alliance co-hosted a webinar with the U.S. Agency for International Development (USAID) to explore the critical role of social service workers in schools and health care facilities and to provide promising practice models for the effective deployment of social service workers in these community settings.

If you missed the event or would like to revisit any of the materials, [the webinar recording and associated slide decks are now available on our website.](#)

Upcoming Events

The events below can be found on the [Global Events](#) page of our website. If you have a new event to share, [please contact us.](#)

[WEBINAR SERIES] Beyond the pandemic: Exploring social work ethics and values as a contribution to a new eco-social world

The IFSW and Social Work Ethics Research Group invite social workers around the world to join them for a series of webinars which will examine ethical perspectives of social work throughout COVID-19. The webinars will be recorded and findings will be submitted to the [People's Global Summit](#), 29 June – 2 July 2022.



You are invited to participate in any regional webinar:

- Webinar in Africa Regional time: TBD
- Webinar in Asia-Pacific Regional time: TBD
- Webinar in North American Regional time: Wednesday 13 April 2022
- Webinar in Latin America American Regional time: TBD

Registration is now open for the North American webinar, [here.](#)

Registration for other regions will be announced on the [IFSW website](#) as soon as dates are confirmed.

[LEARNING SERIES] Continuing professional development short course: Social work in the context of war and conflict | 30th March to 3rd May

This 6-week Short Course critically explores different dimensions of social work in the context of conflict.

Social Services and social work practitioners are among the first to be involved in the provision of humanitarian support to affected communities.

However, the role of social work in this context is diverse and yet to be determined. This series will present the latest research on social work in the context of conflict, bringing together international researchers, practitioners, and people with lived experience. The first session was held on 30th March and subsequent sessions will be held weekly through 3rd May.



[Register to attend.](#)

[SUMMIT] The People's Global Summit | Co-building a new eco-social world: Leaving no one behind | 29th June to 2nd July 2022

The Alliance is proud to be a partner for IFSW's upcoming People's Summit. The summit will bring together individuals and communities, people of lived experiences, along with global organizations to create a set of globally shared values for an eco-social world that leaves no one behind. It will provide spaces for individuals as well as for group representatives to advance their ideas and provide a platform for engagement across different cultures, diverse lived experiences, professional groups, and perspectives. All contributions will shape the Global Values Declaration for a new eco-social world that will be delivered to the United Nations High-Level Political Forum in July 2022 and will create a catalyst for further global action. The Alliance will be hosting a keynote address and live panel. Stay tuned for more details.



[Learn more and register.](#)

Calls for Contribution/Proposals

[CALL FOR CONTRIBUTIONS] 2022 Virtual Annual Meeting of the Alliance for Child Protection in Humanitarian Action

The Alliance for Child Protection in Humanitarian Action is holding their 2022 Annual Meeting over a virtual platform from the 20th to 22nd June 2022. The annual meeting represents a forum where important themes can be discussed and ways forward can be developed. To achieve this,

they invite child protection and other sector actors, researchers, policy makers, and donors to share their experience, successes, failures and groundbreaking ideas. Presentations that cover research, programming models, lessons learned, challenges and failures are welcome, particularly those that encourage examples of work across sectors, across humanitarian and development settings, and by and with local actors.



If you would like to present, submit an abstract using this [Abstract Submission Form](#) and emailing it to annualmeeting2022@alliancecpha.org by 15th April 2022.

[CALL FOR PROPOSALS] UNICEF Tunisia assessment of the social service workforce capacity building needs

The UNICEF Tunisia country office has recently advertised a call for proposal for an assessment of the social welfare workforce and child protection workers capacity building needs. The technical offer and the financial offer must be sent separately either by e-mail to supplytunisia@unicef.org or by mail in a sealed envelope to the address of UNICEF in Tunisia before 15 April 2022.

[Learn more.](#)

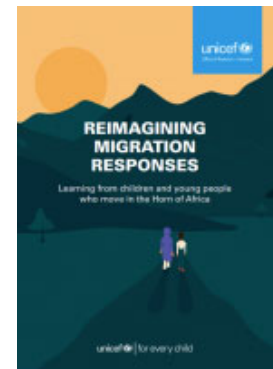
Resources

The resources below can be found in our [Resource Database](#). For resources specific to COVID-19, be sure to view our [COVID-19 Resources](#) page. If you have a new resource to share, [please contact us](#).

Social Service Workforce in Emergency Settings

[REPORT] Reimagining Migration Responses: Learning from children and young people who move in the Horn of Africa

The number of international migrants under 18 is rising, accelerated by complex and fast-evolving economic, demographic, security and environmental drivers. Based on interviews carried out with 1,290 migrant children and young people in Ethiopia, Somalia and Sudan, this report helps address the evidence gap on children and young people migrating in the Horn of Africa by providing a better understanding of their protective environments; their access to services and resources; and their perceptions of safety, well-being and trust in authorities and other providers.

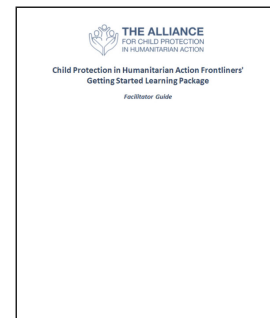


[Access the report.](#)

[LEARNING PACKAGE] Child Protection in Humanitarian Action Frontliner Getting Started Learning Package

The Alliance for Child Protection in Humanitarian Action's *CPHA Frontliner Getting Started Learning Package* replaces the 2014 Frontline Workers package and has been designed to rapidly onboard new team members in the wake of a new emergency or crisis and aims to ensure that frontline workers are introduced to the minimum competencies to work in a safe, effective, accountable, and professional way with children, families, and communities. The learning package has been designed to be delivered in modules through both face-to-face and remote facilitation.

Associated files include a facilitator's guide, participants handout and self-assessment Excel tool. The package is currently available in Arabic, English, French, Polish, Spanish and Ukrainian.



[Access the learning package.](#)

[TOOLKIT] Community Volunteer Toolkit and Training Manual

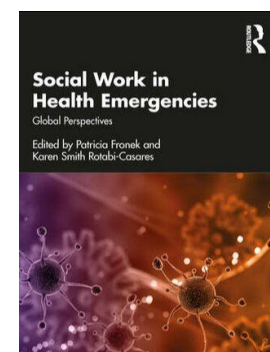
Today, more than ever, volunteers are on the frontlines of protecting children in their communities. The Toolkit for Community Child Protection Volunteers and supplementary training manual, developed by the Alliance for Child Protection in Humanitarian Action, aim to promote evidence-informed best practices when engaging community volunteers in child protection responses. This toolkit is based on the [Community Engagement in Case Management](#) study completed in 2020. The study included a review of the evidence on the effectiveness of community volunteers, as well as a comparison of its findings with data from current practice. Methods included interviews with child protection practitioners and an examination of documents such as training materials, standard operating procedures and guidelines.



[Access the toolkit.](#)

[BOOK] Social Work in Health Emergencies: Global Perspectives

This is the first comprehensive book that provides accessible, international knowledge for practitioners, students and academics about social work in health emergencies and spans fields of practice across world regions with particular reference to the COVID-19 pandemic. The book is divided into sections focused on regional and historical perspectives; social work practice, issues and responses; and preparing for the future. The book is available for \$39.16.

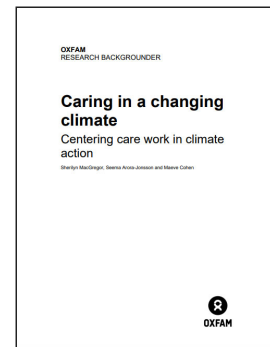


[Access the book.](#)

Supporting the Social Service Workforce

[REPORT] Caring in a Changing Climate: Centering Care Work in Climate Action

The global care crisis is being exacerbated by the global climate emergency, with interlocking impacts that threaten lives and livelihoods in all parts of the world. These impacts are particularly severe in resource-based economies and make everyday life difficult for people living with scarce resources and low incomes in rural areas of the global South. The aim of this report is to fill a knowledge gap by examining the points of interaction between climate change impacts and the amount, distribution, and conditions of unpaid care work. We focus on care workers rather than those who are cared for, while stressing the relational nature of care and acknowledging that carers too require care.



[Access the report.](#)

[TECHNICAL GUIDE] The Child Welfare Worker Safety Guide

Ensuring child welfare worker safety is a complex concern. Doing so encompasses not only taking measures to prevent the threat or reality of physical violence, but also promoting psychological and emotional safety, as well as resilience, within the workplace. This publication, produced by the National Child Welfare Workforce Institute, USA, examines current research regarding child welfare worker safety, focusing on the context and root causes of violence against child welfare workers, the laws and policies US states have used to address the issue, and the strategies that agencies and workers can use to enhance workers' safety and well-being in the workplace.



[Access the guide.](#)

[Study] Taking Care of the Caregivers: The moderating role of reflective supervision in the relationship between COVID-19 stress and the mental and professional well-being of the infant and early child mental health workforce

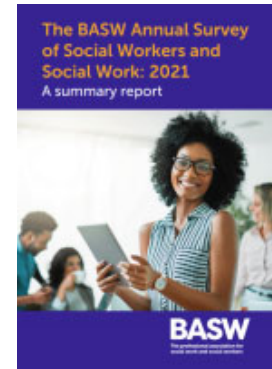
This study examined the relationships between COVID-related stress, mental health and professional burnout in the infant and early child mental health (IECMH) workforce and examined reflective supervision and consultation as a potential protective factor in the context of COVID-related stress. The study also seeks to examine the impact of COVID-related stress on general stress, anxiety, depression, and professional burnout in the IECMH workforce. Further, the study will examine the role of self-care behaviors as a possible mechanism through which COVID-related stress impacts provider well-being and examine reflective supervision and consultation as a professional resource that is associated with lowering the detrimental impact of COVID-related stress on self-care.



[Access the study.](#)

[REPORT] The BASW Annual Survey of Social Workers and Social Work: 2021 A summary report

In this summary report, the British Association of Social Workers (BASW) presents the findings of its 2021 annual survey providing an insight into the state of the profession in the UK, the views of social workers and student social workers on key topics and the ongoing impact of working during the COVID-19 pandemic and beyond. The findings offer a snapshot of how current and future members of the profession feel about core issues right now, including public perception of the profession, what they find most rewarding in their current role and workplace, the challenges facing the profession and their plans for the immediate future.



[Access the report.](#)

Social Service Workforce and Care Reform

[REPORT] Situational Analysis of Care Reform in the Republic of Moldova

From January to July 2021, Changing the Way We Care in Moldova conducted research on key elements of care reform. This report summarizes the research, which explored 1) capacity and competencies of the social assistance workforce; 2) case management tools and practices; 3) type and prevalence of public and private social support services; 4) knowledge, awareness, and practices of the population towards key topics related to care including vulnerable families and children, deinstitutionalization, reintegrated children and youth, disability, and inclusive education; 5) legislation, policies, and funding streams for care; and 6) scale and profile of children and youth currently living in six residential care facilities targeted for a deinstitutionalization process and lessons learned from previous reunification efforts in Moldova.



[Access the report in English](#)

[Access the report in Romanian.](#)

[PRACTICE GUIDANCE] Safe Places, Thriving Children: Embedding Trauma-Informed Practices into Alternative Care Settings

The purpose of this practice guidance is to improve understanding and practice in relation to working with trauma experienced by children who live in alternative care settings. It primarily focuses on those who care for or work with children directly, but it also speaks to the wider range of professionals e.g. managers, budget holders, policymakers etc., whose roles shape and govern how children experience care in their daily lives. The practice guidance has been designed to meet two clear functions: 1. To act as a continuing support and reference document

to assist those who care for and work with children who live in alternative care and who have been affected by trauma to recognize and understand trauma and to begin to address its consequences. 2. To form part of a wider learning and change project that aims to prompt change in practice, policy and legislation.

[Access the practice guidance document.](#)

[Access the organizational development guidance document.](#)

[Access the appendix with tools for working with unaccompanied minors.](#)

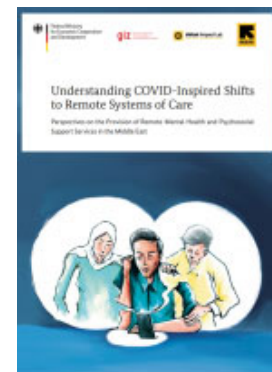


Social Service Workforce and COVID-19

[REPORT] Understanding COVID-Inspired Shifts to Remote Systems of Care

Conflict, displacement, and COVID-19 have increased demands for mental health services – and made them very hard to deliver. The publication explores the potential of remote service provision. The publication builds on qualitative research conducted by colleagues at the Airbel Impact Lab of the International Rescue Committee and validated through participatory consultations with clients, practitioners, and management staff of organizations in the Middle East and globally.

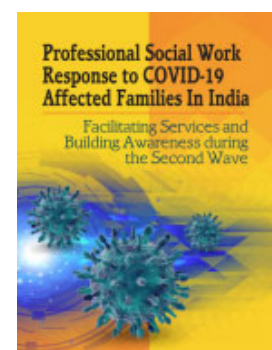
[Access the report.](#)



Professional Social Work Response to COVID-19 Affected Families in India: Facilitating Services & Building Awareness during the Second Wave

This report is the outcome of a nationwide online survey carried out between July and September 2021 to capture the professional social work's response to the second wave of the COVID-19 pandemic in India. It comprises the analysis of responses received from departments/schools of social work, civil society organizations and government organizations headed by professional social workers, and individual social workers representing all the states and the Union Territories. Findings reveal the widespread role social work organizations and individual social workers played in supporting the affected families and communities during the second wave. The report highlights the strengths of the social work profession in helping and empowering vulnerable and marginalized individuals, groups and communities in the society.

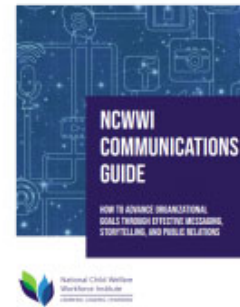
[Access the report.](#)



Advocating for the Social Service Workforce

[TECHNICAL GUIDE] National Child Welfare Workforce Institute (USA) Communications Guide: How to advance organizational goals through effective messaging, storytelling and public relations

The NCWWI Communications Guide helps child welfare programs' initiate or improve their existing communications strategies to build public support, strengthen the workforce, improve partnerships, increase community collaboration, and enhance perceptions. Communication strategies support sustainable systemic change in service of equitable and just outcomes for children, youth, and families. The Guide illustrates positive impacts of communication and public relations efforts for child welfare programs; examples of how to shift the narrative about child welfare programs; strategies to develop messaging that will resonate with audiences; and suggested channels and products to get the word out.



[Access the guide.](#)

Social Protection

[REPORT] Mainstreaming gender into social protection strategies and programmes: Evidence from 74 low- and middle-income countries

The importance of mainstreaming gender into social protection policies and programmes is increasingly recognized. However, evidence on the extent to which this is actually happening remains limited. This report contributes to filling this evidence gap by drawing on the findings of two complementary research projects undertaken by UNICEF Office of Research – Innocenti and UN Women in 2019. Using a specifically developed analytical framework, these two projects reviewed 50 national social protection strategies and 40 social protection programmes across a total of 74 low- and middle-income countries to assess the extent to which they incorporate gender equality concerns.



[Access the report.](#)



Join the Alliance

Not yet a member of the Alliance? We have over 3,000 members across nearly 150 countries who have joined us to support the work of strengthening the social service workforce. [Register to become a member.](#)

[Follow Us on Twitter](#) | [Like Us on Facebook](#) | [Follow us on LinkedIn](#) | [Forward to a Friend](#) | [Join Our Email List](#)

[About Us](#) | [Contact Us](#) | [Get Involved](#) | [Resources](#) | [Membership](#) | [Donate](#)

This email was sent to <<Email Address>>

[why did I get this?](#) [unsubscribe from this list](#) [update subscription preferences](#)

Global Social Service Workforce Alliance · 1875 Connecticut Ave NW, 10th Floor · Washington, DC 20009 · USA