



News, Events and Resources | February 2022

Secretariat Updates

We are seeking a technical consultant and a research assistant to develop a briefing paper on promising practice models for deployment of social service workers at health facilities

The Global Social Service Workforce Alliance is currently seeking a technical consultant and a research assistant to develop a concise but well evidenced briefing paper on the optimal role and functions of the social service workforce in health facilities, for both inpatients and outpatients. The paper will need to compile and review evidence from a range of countries based on interviews, research, and other data. The paper will analyze and summarize the main approaches and models in this field of work and highlight the key ingredients of promising practice in this area of work.



The consultancies may take place in any location, providing there is reliable communication to conduct online or telephone interviews and communicate with Alliance staff (based in different countries). The technical consultancy is estimated to be completed through 35 days of work during the period of March 2022 until the end of October 2022. The research assistant's input is estimated to be completed through 20 days of work during the period of March 2022 until the end of July 2022.

[View more information and details on how to apply.](#)

#WSWD2022: Send us your events and content

Every year, World Social Work Day is celebrated across the world on the third Tuesday of March, and events are organized throughout the month of March. The day is an opportunity for social workers and others in the social service sector to celebrate their achievements as well as to raise awareness and support for the important role they play in the lives of children, families and communities facing adversity.



This year's World Social Work Day takes place on the 15th March 2022. The theme: 'Co-building a New Eco-Social World: Leaving No One Behind' coincides with the theme of the upcoming [People's Summit](#).

The Alliance aims to provide a space to showcase events and activities taking place as well as to promote blogs and content relevant to World Social Work Day. **If you have an event or activity scheduled, or content you would like to share, please contact our Communications and Advocacy Manager, [Alena Sherman](#), so that we can distribute them among social service workers across the globe. The Alliance will also be hosting a webinar on World Social Work Day. Please stay tuned for more details and information to follow.**

[Return to our World Social Work Day page for details on upcoming events and activities as they are added.](#)

Upcoming Events

The events below can be found on the [Global Events](#) page of our website. If you have a new event to share, [please contact us](#).

[WEBINAR] Social Workers on the Frontlines of Inclusive & Resilient Recovery | 16 February 2022, 10am (EST)

Join the International Federation of Social Workers NY-UN Representatives for the side panel event in support of the 60th Session of the Commission for Social Development. Speakers will highlight the local and global strategies to promote the inclusive and resilient recovery COVID-19 including:

- Vaccine Equity
- Transformative Social Protection Systems
- Socially Just International Trade Agreements
- Food Sovereignty

[TOOLKIT LAUNCH] Children Associated with Armed Forces or Armed Groups Programme Development Toolkit Launch | 16 February, 3pm (CET)

The Children Associated with Armed Forces or Armed Groups (CAAFAG) Task Force of the Alliance for Child Protection in Humanitarian Action will be launching the CAAFAG Programme Development Toolkit. The toolkit will provide field practitioners with the knowledge and skills to design quality gender-based programmes for CAAFAG, with the involvement of children, including former CAAFAG. The Programme Development Toolkit includes guidelines on how to design a CAAFAG project with practical guidance using a step-by-step approach, training Resources to train managers' and other positions in project development and tools to contextualize.



[Learn more.](#)

The Global Disability Summit | 16-17 February 2022

The Global Disability Summit offers a concrete mechanism for collecting new, ambitious and widespread commitments critical to achieving real change for persons with disabilities. The Summit will mobilize efforts for the implementation of the UN Convention on the Rights of Persons with Disabilities, the principle of 'Leave No One Behind' and building back better and more inclusive with regards to Covid-19. The International Disability Alliance, the Government of Norway and the Government of Ghana will host the second Global Disability Summit, which will be mainly virtual.



[Learn more.](#)

[TOOLKIT LAUNCH] Community Volunteer Toolkit and Training Manual: Part 1. Volunteers' Roles in Case Management | 8 March, 2pm (CET)

The Alliance for Child Protection in Humanitarian Action (ACPHA) will host a global launch of the Community Volunteer Toolkit and Training Manual: Part 1. Volunteers' Roles in Case Management. These new resources aim to inspire child protection organizations across the globe to recognize the essential role of volunteers and develop case management responses that will engage volunteers ethically. This toolkit is based on the [Community Engagement in](#)

of experiences of piloting the resources in Malawi, Nigeria, and Mozambique. They will also share how Child Protection practitioners in various roles can use the resources, and where to find them.

[Learn more.](#)

ISPCAN Congress, Quebec City, Canada | 28-30 March 2022

In a post-pandemic context, the theme of the congress “Caring Communities to Improve the Well-being of Children and Families” could not be better chosen. Indeed, COVID-19 has seriously damaged our social and community fabric, and the most vulnerable children in our societies are among those who will suffer the most in the long run. For them, we must rebuild our solidarities, recreate our links, repair our communities and relaunch our alliances to better support our families. Come share your knowledge and your solutions to ensure that, from north to south, as many children and adolescents as possible can grow up in nurturing environments free from violence, abuse and neglect. ISPCAN is closely monitoring the situation surrounding COVID-19. At the moment, they are moving ahead with plans to host the event in person and are also looking at hybrid options to also make the congress available online.



[Learn more.](#)

The People's Global Summit | Co-building a New Eco-Social World: Leaving No One Behind | 29th June to 2nd July 2022

The Alliance is proud to be a partner for IFSW's upcoming People's Summit. The summit will bring together individuals and communities, people of lived experiences, along with global organizations to create a set of globally shared values for an eco-social world that leaves no one behind. It will provide spaces for individuals as well as for group representatives to advance their ideas and provide a platform for engagement across different cultures, diverse lived experiences, professional groups, and perspectives. All contributions will shape the Global Values Declaration for a new eco-social world that will be delivered to the United Nations High-Level Political Forum in July 2022 and will create a catalyst for further global action.



[Learn more.](#)

Calls for Contribution

The IFSW and Bath Spa University Centre for Health and Cognition (in association with Ulster University Social Work Department) are carrying out the next stage of a long-term global research project shining a light on the everyday working environment of social workers around the world. All social workers are invited to complete the survey. They are aiming to collect information from social workers from across the world in order to investigate working conditions, and how these conditions may influence psychological wellbeing.

[Learn more and access the survey.](#)

Resources

The resources below can be found in our [Resource Database](#). For resources specific to COVID-19, be sure to view our [COVID-19 Resources](#) page. If you have a new resource to share, [please contact us](#).

Ruta de prevención de la separación familiar innecesaria y derivación a servicios sociales y especializados

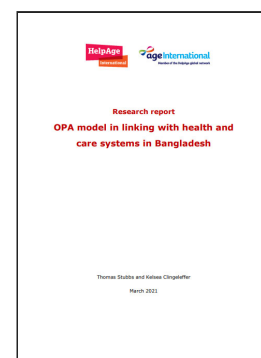
Esta Ruta de Coordinación, fue construida y diseñada de manera participativa y liderada por CTWWC Guatemala, con el objeto de articular de manera eficiente y coordinada los esfuerzos que los profesionales de las instituciones gubernamentales y municipales vinculadas a la prevención y protección, deben promover, gestionar y facilitar la derivación a los servicios sociales y especializados que permitan la prevención de la separación familiar innecesaria de los niños, niñas o adolescentes de su entorno familiar, basando las acciones en la metodología de manejo de casos y priorizando ante cualquier decisión que se tome, la observancia del interés superior del niño.



[Accede al documento.](#)

[REPORT] Older people's association model in linking with health and care systems in Cambodia

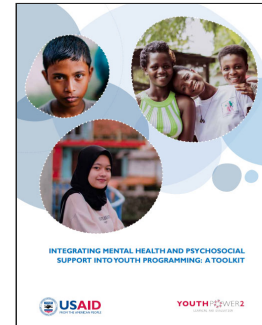
To improve the well-being of older people in Asia, HelpAge International and HelpAge Cambodia are piloting an Older People's Association (OPA) model in Bangladesh, Cambodia, and Indonesia. These multifunctional community-based organisations mobilise older people to improve their own lives and contribute to community development across several domains including health and social welfare. Health-related activities include health check-ups and referrals, health education, and financial and social support. This research aimed to identify strategies for appropriate integration of health and care activities of OPAs into health and social welfare systems in Cambodia.



[See also Older people's association model in linking with health and care systems in Bangladesh.](#)

[TOOLKIT] Integrating Mental Health and Psychosocial Support into Youth Programming: A Toolkit

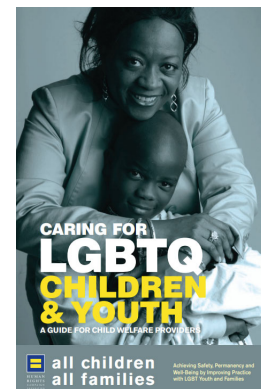
This Integrating Mental Health and Psychosocial Support into Youth Programming: A Toolkit provides strategies and tools for designing, implementing, and evaluating mental health and psychosocial support (MHPSS) programs and activities for youth in low- and middle-income countries and conflict-affected contexts. The Toolkit is a resource for standalone youth MHPSS programs and MHPSS activities that are integrated into cross-sectoral youth-focused programs (e.g., health, gender and gender-based violence or GBV, workforce development/youth employment, education, violence prevention, peace, and stability, etc.). The Toolkit includes guidance based on good practice for MHPSS, with recommendations for adapting program designs to community needs and the local context.



[Access the toolkit.](#)

[GUIDE] Caring for LGBTQ Children & Youth

This booklet was developed by the Human Rights Campaign Foundation's All Children – All Families project. The project engages child welfare agencies across the United States, providing resources, technical assistance and training on best practices for supporting and serving LGBTQ youth and LGBT families. The resource provides information about the care and support of lesbian, gay, bisexual, transgender and questioning children and youth. Unfortunately, we know LGBTQ youth are disproportionately represented in the child welfare system and often face discrimination and mistreatment in out-of-home care. This guide includes information on terminology and several basic, but key, tips on how to best support and care for LGBTQ children and youth. You will also find resources and helpful websites for more information to competently serve all children and youth in your care, including those who may identify as or be perceived as LGBTQ.



[Access the booklet.](#)

[E-COURSE] Action to End Child Sexual Exploitation and Abuse E-Course

The sexual abuse and exploitation of children is a violation of human rights and a health problem with significant consequences for global health and development. This course is designed to increase awareness and knowledge about child sexual exploitation and abuse, including abuse

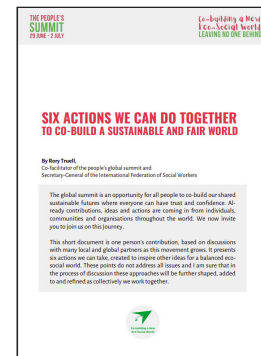
policy, advocacy and a wide range of programmatic aspects and draws on UNICEF's evidence review and brief on "Action to End Child Sexual Abuse and Exploitation". The course is designed for professionals in government, civil society, and the private sector.



[Access the E-course.](#)

[ARTICLE] Six actions we can do together to co-build a sustainable and fair world

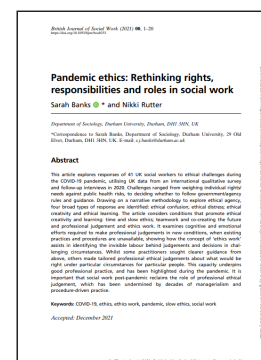
The [People's Global Summit](#) is an opportunity for all people to co-build our shared sustainable futures where everyone can have trust and confidence. Already contributions, ideas and actions are coming in from individuals, communities and organisations throughout the world. This short document by Rory Truett, IFSW Secretary-General as Co-facilitator of the People's Global Summit, has summarized six key action points to co-build a new sustainable world, based on discussions with many local and global partners as this movement grows. It presents six actions we can take, created to inspire other ideas for a balanced eco-social world. The document is also an invitation for all people to make their contributions to the People's Summit.



[Access the document.](#)

[ARTICLE] Pandemic Ethics: Rethinking rights, responsibilities and roles in social work

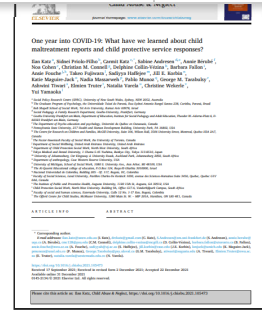
This article explores responses of 41 UK social workers to ethical challenges during the COVID-19 pandemic. Challenges ranged from weighing individual rights/ needs against public health risks, to deciding whether to follow government/agency rules and guidance. Drawing on a narrative methodology to explore ethical agency, four broad types of response are identified: ethical confusion; ethical distress; ethical creativity and ethical learning. The article considers conditions that promote ethical creativity and learning: time and slow ethics; teamwork and co-creating the future and professional judgement and ethics work. It examines cognitive and emotional efforts required to make professional judgements in new conditions, when existing practices and procedures are unavailable, showing how the concept of 'ethics work' assists in identifying the invisible labour behind judgements and decisions in challenging circumstances.



[Access the article.](#)

[ARTICLE] One Year Into COVID-19: What have we learned about child maltreatment reports and child protective service responses?

children are not considered a risk population for the virus, there is accumulating knowledge regarding children's escalating risk for maltreatment during the pandemic. The current study is part of a larger initiative using an international platform to examine child maltreatment (CM) reports and child protective service (CPS) responses in various countries. Across all of the countries, COVID-19 had a substantial negative impact on the operation of CPSs and the children and families they serve by disrupting in-person services. One year into the COVID-19 pandemic, new reports of CM varied across the regions. In some, the impact of COVID-19 on CPS was low to moderate, while in others, more significant changes created multiple challenges for CPS services.



[Access the article.](#)

[TOOLBOX] Safeguarding Toolbox: For organizations to develop & implement effective, relevant safeguarding policies and practices

This toolbox can be used by organizations working with and for vulnerable children and adults, particularly those at risk of separation or living in alternative care. The materials in this toolbox include the risk assessment tool, job aids and guidance identified as useful for work with and for vulnerable children and adults, particularly those at risk of or living in alternative care. This toolbox will help other organizations understand what protection and safeguarding means in the variety of contexts; assess the risks and take stock of protection and safeguarding regularly not just as a one-off activity; supplement and strengthen policies and procedures and align to global best practice standards; implement and live the policies; and build capacity and raise awareness around safeguarding and integrate an understanding of underlying causes of exclusion, discrimination, violence, abuse and exploitation in program strategies.



[Access the toolbox.](#)



Join the Alliance

Not yet a member of the Alliance? We have over 2,900 members across nearly 150 countries who have joined us to support the work of strengthening the social service workforce. [Register to become a member.](#)

Subscribe

Past Issues

Translate ▼

[About Us](#) | [Contact Us](#) | [Get involved](#) | [Resources](#) | [Membership](#) | [Donate](#)

This email was sent to <<Email Address>>

[why did I get this?](#) [unsubscribe from this list](#) [update subscription preferences](#)

Global Social Service Workforce Alliance · 1875 Connecticut Ave NW, 10th Floor · Washington, DC 20009 · USA